



CENTURION HOUSE

37 JEWRY STREET, EC3

NEWLY FITTED CONTEMPORARY OFFICE SPACE
AVAILABLE FROM 2,052 - 8,644 SQ FT



CENTURION HOUSE

37 JEWRY STREET, EC3

Centurion House has recently undergone an extensive refurbishment to provide a new building reception, new end-of-trip provisions and 8,644 sq ft of modern contemporary office space across four individual floors.

The 1st, 3rd & 4th floors all benefit from a fully fitted and furnished Landlord provision, with variation of finishes on offer. The 2nd floor will be available in a new CAT A+ condition.

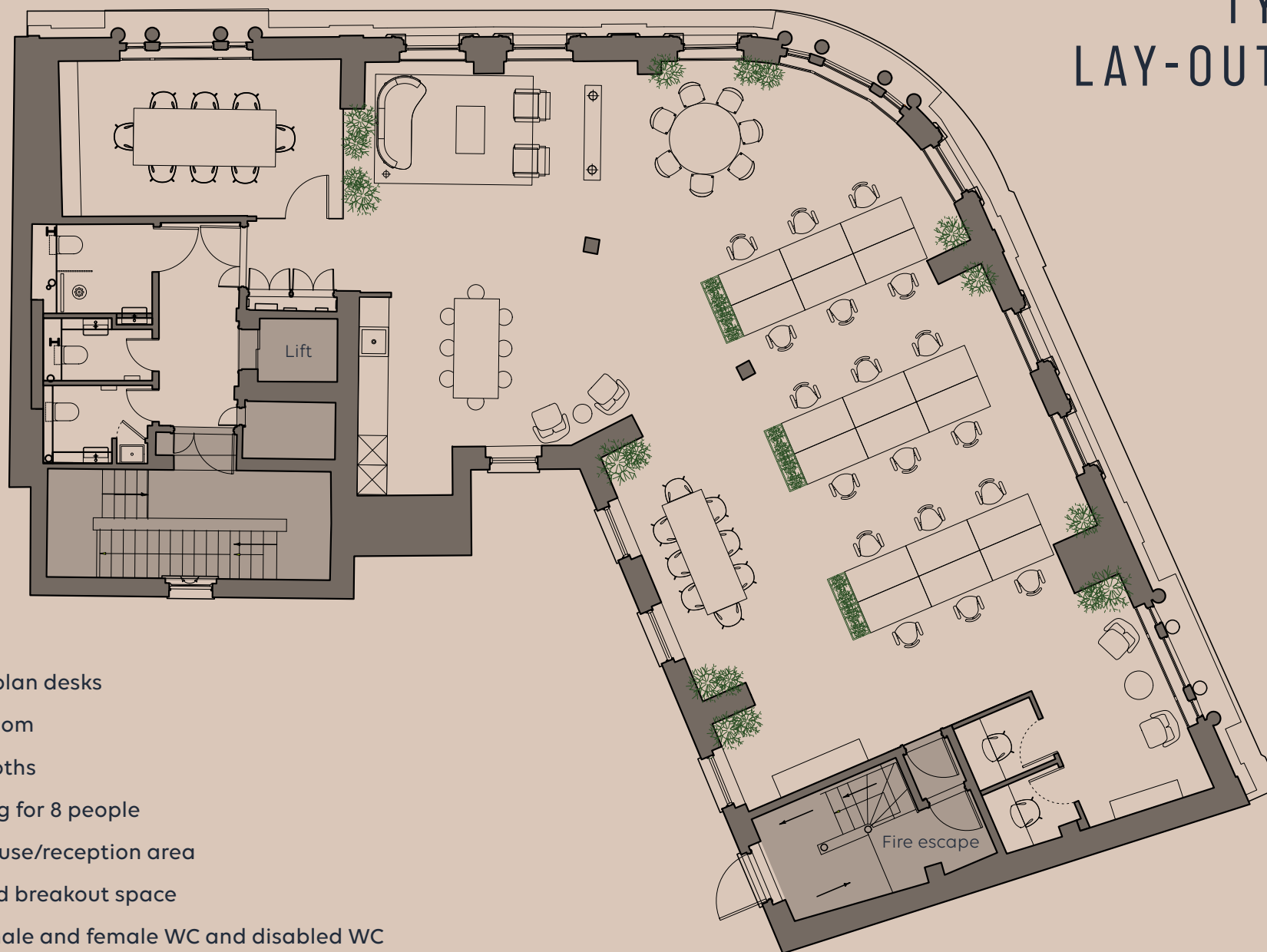


AVAILABILITY

FLOOR	AREA (SQ FT)	AREA (SQ M)	CONDITION
4th	2,052	190	Under Offer
3rd	2,221	206	Newly fitted & furnished
2nd	2,215	206	Under Offer
1st	2,156	199	Let



TYPICAL LAY-OUT PLAN



- 18 x Open plan desks
- 1 x Boardroom
- 2 x Call booths
- Hot desking for 8 people
- Front of house/reception area
- Kitchen and breakout space
- Demised male and female WC and disabled WC
- Demised shower

SPECIFICATION



Newly Refurbished
Building Reception



New Fully Fitted
& Furnished Office Floors



Full Access Raised Floors



New VRF
Air Conditioning



New LED (LG7)
Lighting



New Cat 6
Wiring Throughout



Refurbished & Demised
WCs including disabled
on each floor



Fibre
Connectivity



New End-of-Trip Facilities
& Bicycle Storage



Target EPC B



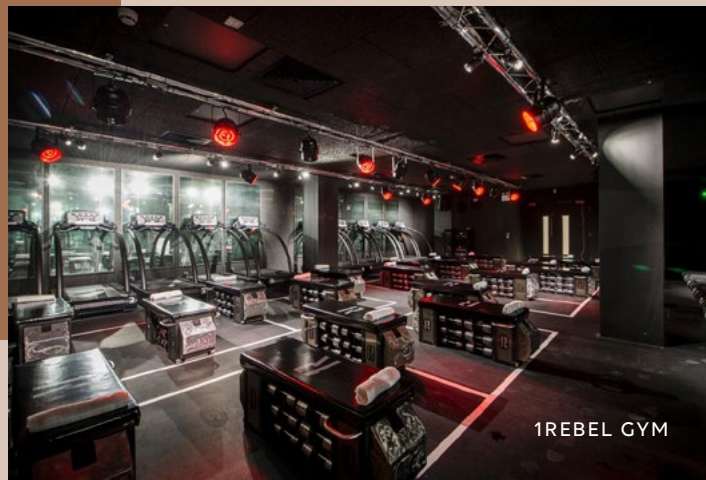
LOCATION

Centurion House benefits from prominent City of London location on the corner of Jewry Street and Aldgate High Street, in close proximity to Aldgate, Liverpool Street and Aldgate East Stations.

The local area benefits from a variety of amenities and F&B offerings with the City core and Spitalfields Market both within a 10 minute walk.



SPITALFIELDS MARKET



1REBEL GYM



ALDGATE SQUARE

TRANSPORT

Both Liverpool Street and Fenchurch Street Stations are within comfortable walking distance with Aldgate and Tower Hill underground stations close by.



- Circle Line
- District Line
- Hammersmith & City Line
- Metropolitan Line
- Central Line
- DLR
- ⋯ Elizabeth Line (Crossrail)
- - - National Rail



CONTACT

For further details or to arrange an inspection, please contact:



Nick Russell-Smith
+44 (0)7918 588 107
nrs@newtonperkins.com


Harry Woods
+44 (0)7884 602 870
hw@newtonperkins.com

Leo Gough
+44 (0)7546 695 724
lg@newtonperkins.com

Developed by:



Newton Perkins LLP, Peek House, 20 Eastcheap, London EC3M 1NP

Newton Perkins for themselves and for the vendors or lessors of this property whose agents they are given notice that:- (1) The particulars are set out as a general outline for the guidance of the intending purchasers and do not constitute part of an offer or contract; (2) All descriptions, dimensions, references to condition and necessary permissions for use and occupation and other details are given without responsibility and any intending purchasers shouldn't rely on them as standards or representations of fact but must satisfy themselves by inspection or otherwise as to the correctness of each of them; (3) No persons in the employment of Newton Perkins has any authority to make or give any representation or warranty whatsoever in relation to this property. March 2024  www.cube-design.co.uk (Q5501)